

# Glass manipulator ROBBY 280

## For all terrains, capacity 280 kg

Ideal robot for handling or laying large windows and heavy glass on site. Equipped with pneumatic suckers and electric motor, powered by batteries. The movements of all the parts are easily controlled by one person.



### IN EVIDENCE:

- ▶ Dual circuit suction cups
- ▶ telescopic arm
- ▶ 2 lateral stabilizers



- Double circuit suction cups with 280kg capacity - EN 13155
- Audible and visual alarms in case of poor functionality of the suckers
- Fully electric handling
- Telescopic arm that allows great precision in the movement of the load
- Joint of the telescopic arm that allows it to pass through the doors
- Manual rotation of the suction cups in all directions
- Telescopic arm 500 mm
- Electric drive for Robby movement
- Front drive wheels
- Rear emergency stop to protect the user
- Corporate and protected battery charger
- Battery charge indicator and hour meter
- 2 lateral stabilizers
- Side translation of 200 mm to facilitate installation

# Glass manipulator ROBBY 280

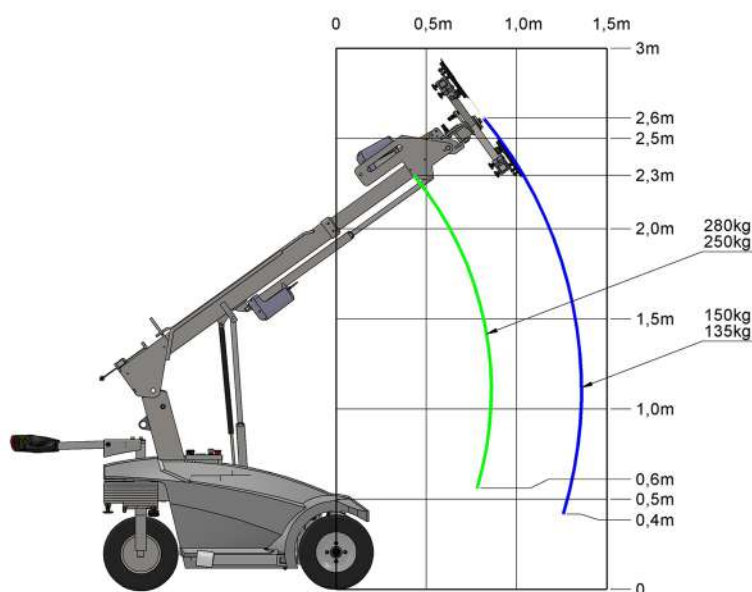
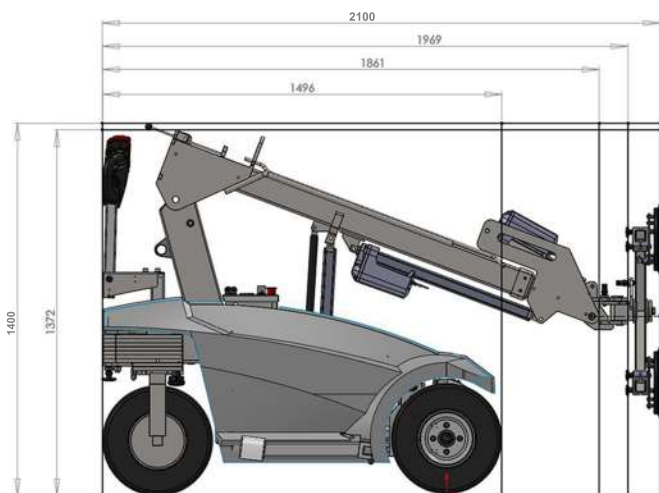


Model	Weight	Larghezza	Lunghezza
Robby 280	520 kg	800 mm	2100 mm

Charging voltage	Integrated charger	Charging times	Batteries
230 V	Cetek XT 14.000	c.a 8 h	2x12V / 2x 85 A

Movement speed	Front-wheel drive	Regolazione laterale	Lateral adjustment
Variable	1.000 W - AC	Elettric	200 mm

Autonomy	Braking system	Telescopic arm stroke	Arm capacity
16 hours	Electric	500 mm	400 kg



4 Suction cups	Loading arm inclination
Ø 270 mm	-100° / +100°